



MAKING
IT GREEN

TALISEN Enterprise Sustainability Platform

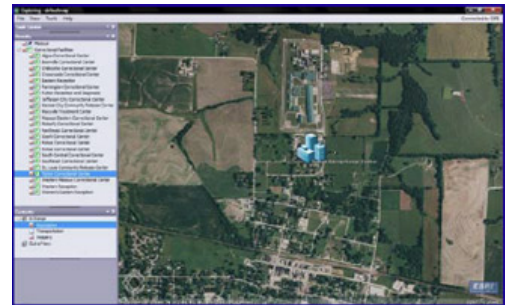
Talisen Technologies, Inc. provides technical solutions for building life cycle management. This solution, called Enterprise Sustainability Platform, is a visionary approach to managing a portfolio of facilities from a global and total cost of ownership perspective. The key to the solution is providing executives, managers, and workers the right information on a real time basis to make correct and sustainable decisions within construction, energy, real estate, and communications.

Through intelligent facilities operations, the solution sustains, controls, and conserves energy usage measured through a secure web based portal. Facilities and Energy Information Management is at the most fundamental level a combination of hardware and systems components, rapidly developed and implemented by Talisen in a Global Dashboard to provide next generation facility management capabilities. The following are real time data information examples of the portal.

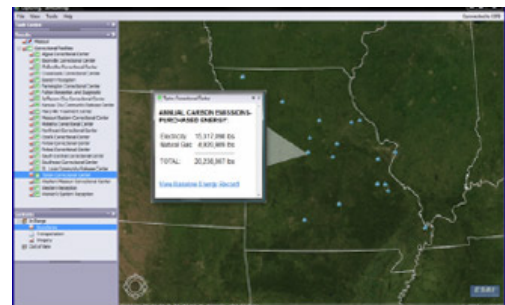
"Global Dashboard"



"Geospatial Mapping of Facilities"



"Carbon Emissions Analysis"



Sustainable Solutions Include:

- Building Information Modeling
- Enterprise Energy Management
- Enterprise Resource Management
- Work Order Automation
- Condition Assessment and Planning
- Synthetic Metering
- Business Process Management
- Computerized Maintenance Management



MAKING
)IT(GREEN

TALISEN Enterprise Sustainability Platform Solution

Enterprise Sustainability Platform consolidates the management of facility information, resources and processes in a single, controlled environment. This solution includes:



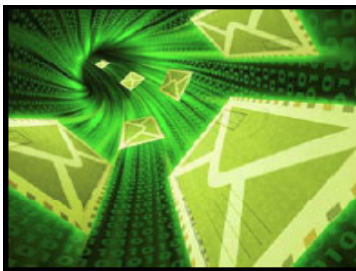
Global Access Facilities Portal (GAFP)

- Provides centralized and secure role-based access into energy and maintenance management applications.
- Allow users to observe energy usage and maintenance requests and affect changes in real-time.
- "One-stop" access to each of the project pillar applications: EEM, UBM, Facility Communications Assessment and BPM.
- Provide an organization-wide federated authentication and authorization mechanism, allowing a common login and access to the majority of application and data slides.



Enterprise Energy Management (EEM)

- Provide a unified enterprise solution connecting to existing devices.
- Enable a highly integrated and automated approach to energy use analysis, energy use management and facility equipment maintenance management.
- Incorporation of enterprise-level analytics, real-time reporting and dashboard views of operational efficiency.
- Verifiable, goal-oriented management of all facilities, allowing consolidation of the many independent stand-alone facilities.



Utility Bill Management (UBM)

- Development of an interface through which utility bills will be entered, subsequently triggering a payment to the utility provider.
- Development of a Utility EDI (Electronic Data Interchange) Connector through which bills will be received electronically and entered automatically into the utility bill interface.
- Development of a consolidated view into historical utility bill data, including trending information and comparison.
- Leverage the utility bill and tariff information to make load-shaping decisions and also analyze how generation resources can be utilized to shave demand during peak periods.



MAKING
)IT(GREEN



Facility Communications Infrastructure

- Provide visibility into the current and expected network connectivity of remote and possibly outdated facilities, specifically those facilities identified for EEM implementation.
- Address the determination of provisioned circuit access, related charges and available and optimized connectivity.
- Through the discovery and aggregation of network connectivity (reduction of circuits) and the aggregation of circuit purchasing a substantial savings is achievable on a per instance basis.



Facilities Business Process Management (BPM)

- Reduce material and labor costs incurred for facilities capital acquisition/project management and ongoing facilities maintenance operations.
- Optimize and standardize processes, ensuring best practice compliance by staff, and adherence to defined policies and procedures.
- A 100% web-enabled, integrated application suite allowing trained users to define, execute and monitor business processes from beginning to end, eliminating redundancy

TALISEN TECHNOLOGIES, INC.

12655 Olive Blvd Suite 500, St. Louis, MO 63141 USA

Ph. 314.317.7700 • Fax: 314.317.7701

Email: info@talisentech.com • www.talisentech.com